



Services

Insulation

- Specializing in the hybrid insulation system
- Open cell, closed cell and soy based foam insulation
- Blown in fiberglass insulation
- Cellulose (recycled newspaper) insulation
- Rubbermaid wire and Heirloom shelving and garage systems
- Door and Bath hardware
- Fireplace Mantels

Customers

- Residential-both production and custom builders
- Commercial- specializing in hotel, townhome, assisted living and condominium

Areas Served

- Central and South Texas with offices in Austin and San Antonio



Membership:

- United States Green Building Council
- Texas Association of Builders
- Insulation Contractors of America
- National Association of Home Builders
- RESNET
- Austin Green Building Program
- Build San Antonio Green
- Greater San Antonio Home Builders Association
- Texas Home Energy Raters Organization
- Home Builders Association of Greater Austin
- ENERGY STAR ® Partner
- New Braunfels Home Builders Association

www.keyinsulation.com

Headquarters

17325 Bell North Drive, Suite 1
Schertz (San Antonio), TX 78154
Near IH 35 and FM 3009

Phone: 210.937.1082

Fax: 210.490.3603

E-mail: info@keyinsulation.com



www.keyinsulation.com

210.937.1082

Every house is built by someone, but God is the builder of everything.

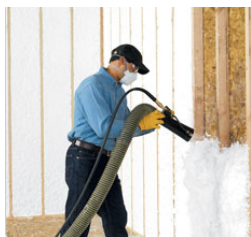
Hebrews 3:4

Hybrid Insulation System by Key Insulation

The **Hybrid Insulation System** is a simple procedure for meeting the customer's needs cost effectively. With a 10 year history in the insulation industry, Key Insulation discovered that one product does not meet all needs. We offer:

- **Closed Cell Foam Insulation**
- **Open Cell Foam Insulation**
- **Agribalance Foam Insulation**
- **Blown In Fiberglass Insulation**
- **Blown in Cellulose Insulation**

Key found that a customer often needed the efficiency afforded by the foam but did not have the budget for an entire project insulated with foam. In this case, we offer fiberglass or cellulose blown into walls or sub-floors and use foam for the attic. Each builder and project has a unique set of



Blown in fiberglass often is installed jointly with foam for a cost effective and energy efficient result for the builder.

hurdles and we offer alternate solutions to meet those needs cost effectively and energy efficiently.

Key Insulation History

Key Insulation began ten years ago as a test within a homebuilding program in San Antonio, Texas. Once the new insulation, cellulose, was installed, the test catapulted the builder into ENERGY STAR® efficiency and the course for the company was set. Eventually, the homebuilder sold the insulation company. Acquisition by its present owner caused expansion even further into foam and fiberglass products which solved problems in various projects. In addition, Key Insulation found that the superior service they offered caused general contractors and builders to ask for further product offerings. Through that request we now offer: shelving, fireplace mantels, hardware and shutters.

Leadership

Within our ranks are experienced and educated folks that understand the science and technology behind energy efficient buildings.

Our leaders have the well rounded breadth of experience to speak your language and find a solution to the problem. With degrees in engineering, practical "on the ground" hands on project management, and sales design and construction experience, we have found our team able to approach the toughest jobs and professionally manage the critical elements.

Why Choose Key?

There's no better way to say this except to say it: we offer a more objective opinion because we install five types of energy efficient insulation. Our crews are better trained and our leaders are better prepared. That's why our track record shows a better performance rating and a superior installation with fewer callbacks or on-site



problems. We're good from the ground up! The people we have on the project are folks we are proud to call ours.

Cellulose wall assembly and a foam roof deck paired as an energy efficient system for this Building.

It's a Whole House System

Homes Gain and Lose Heat Three Ways:

- **Convection:** transfer of heat by moving air. Foam insulation seals the building envelope to create a virtual ice chest.
- **Conduction:** transfer of heat through solid materials. The density of a cavity fill with cellulose will maintain R-value over a wider range of temperatures and reduce air infiltration better than fiberglass.
- **Radiation:** transfer of heat as electromagnetic waves. Loose-fill insulation in the attic restricts radiated heat from the roof flowing through the ceiling.